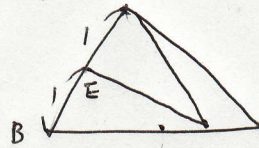
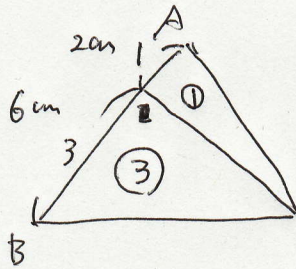
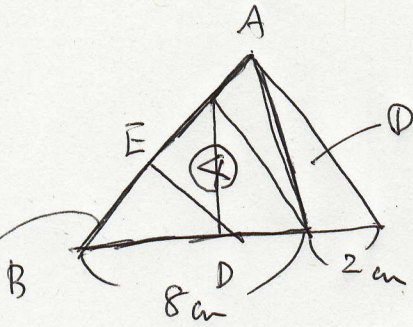
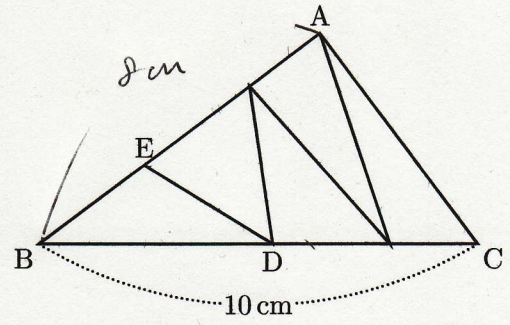
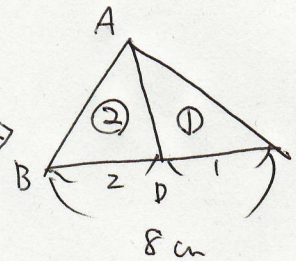




右の図で、BCの長さが10 cmの三角形ABCの内側に作った5つの三角形の面積がすべて等しいとき、BD、BEの長さを求めなさい。



$$\textcircled{BE} \downarrow \\ 6 \div 2 = 3 \text{ cm}$$



$$8 \times \frac{2}{3} = \frac{16}{3} \text{ cm} \quad \textcircled{BD} \downarrow$$

